


EST. 1865
Peterson[®]
OF DUBLIN

“he Thinking Man
smokes a Peterson Pipe –
it draws words of wisdom
from the lips of the wise man,
but keeps the mouth of the fool firmly shut.”

Anon



FACTORY IN SALLYNOGGIN, CO. DUBLIN.



SHOP IN 117 GRAFTON STREET, DUBLIN CITY.

THE PETERSON STORY

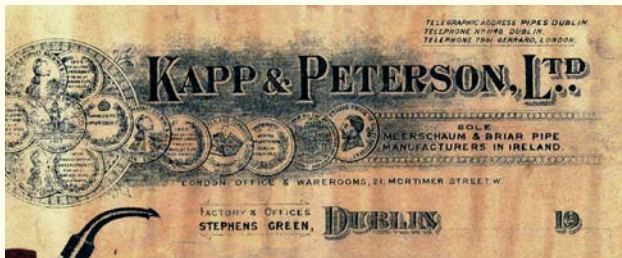
A BRIEF HISTORY OF THE BIRTH OF AN EMPIRE

The Nürnberg brothers Friedrich and Heinrich Kapp, whose elegant Dublin tobacconist first opened for business in 1865 at Grafton Street, Dublin could scarcely have dreamt that they would participate in the birth of a legend.

Friedrich & Heinrich, who christened their shop simply "Kapp Brothers", soon made a name for themselves making and selling quality Meerschaum and Briar Root pipes. It was not long before Charles Peterson, walked into Kapp Brothers Grafton Street premises armed with a revolutionary pipe and ambitious plans for the future.



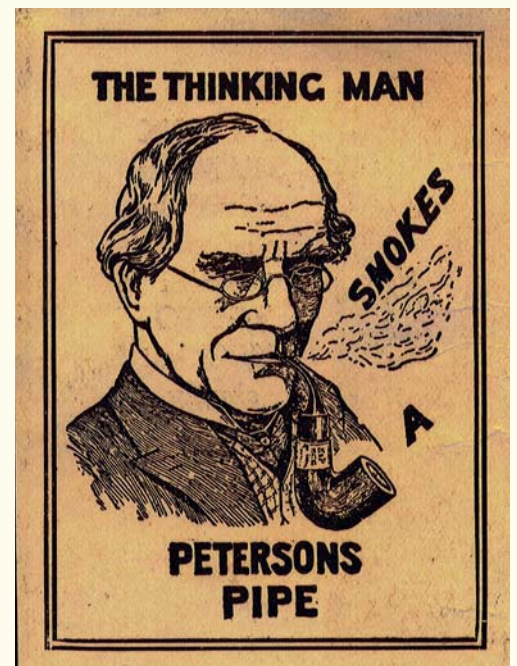
1880 CHARLES PETERSON



There and then, Peterson suggested that the brothers go into partnership with him to turn his pipe dream into the world's dream pipe. They agreed and the company was renamed Kapp & Peterson.

Kapp and Peterson went on to become Dublin's most fashionable and respected manufacturer and purveyor of fine smoking accessories. Pipe and cigar smokers would stroll down to the elegant premises for professional advice on the subtle nuances that determine a good handmade cigar or pipe. The Peterson brand was embraced by politicians, business leaders, sportsmen, artists and writers.

The skills and craft which Charles Peterson applied to his original invention is continued by the dedicated team of craftsmen at Peterson today. Whether as a gift for a friend or for your own personal use, you will appreciate the excellence of the Peterson range of cigars, tobaccos, pipes and gifts.



HALLMARKING

Hallmarking is not a legal requirement in many countries, but it is in Ireland. By Irish Law, the standard of most gold, silver and platinum articles must be tested (known as assaying) at the Assay Office of the Company of Goldsmiths at Dublin Castle. Having established the legal standard of purity, the articles are stamped with a series of marks, known as Hallmarks.



ALL PETERSON SILVER MOUNTED PIPES CARRY THREE DISTINCTIVE MARKS:

- THE SYMBOL HIBERNIA (IRELAND) DENOTING THE COUNTRY OF ORIGIN
- .925 IS A NEW EUROPEAN STANDARD MARK DENOTING THE HIGH QUALITY (PURITY) OF THE SILVER USED
- THE DATE LETTER CODE FOR THE YEAR IN WHICH THE SILVER WAS HALLMARKED AND THE PIPE MADE

THE PETERSON SYSTEM

In 1890, the famous Peterson System pipe introduced a revolution in pipe smoking which brought pleasure to smokers worldwide. This was followed in 1898 by the Peterson Lip mouthpiece, another innovation designed with a deep understanding of the pipeman's needs. The System pipe smokes cool and dry to the last puff and has won for its creators many Gold Medal awards. The Peterson Lip, by adapting the pipe precisely to the contours of the lips and teeth, ensures a comfortable and satisfying smoke at all times.

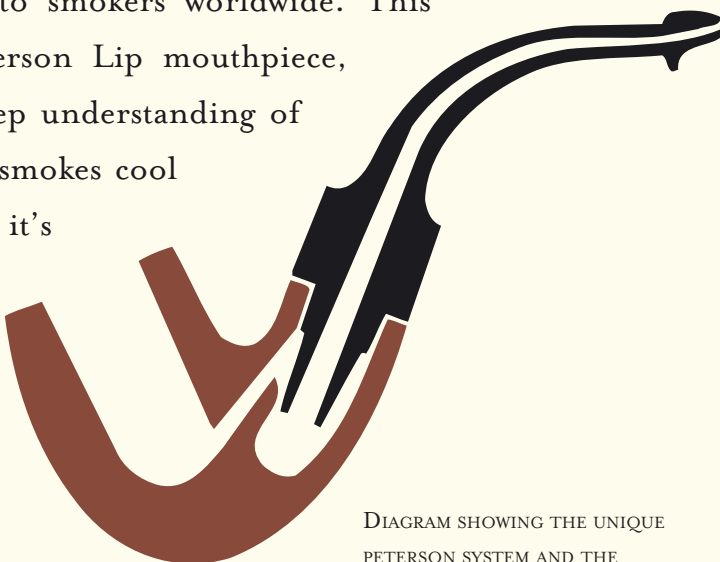


DIAGRAM SHOWING THE UNIQUE PETERSON SYSTEM AND THE PETERSON LIP MOUTHPIECE

SYSTEM

DELUXE QUALITY

The pride of a connoisseur's collection. Each Peterson Deluxe is made from carefully selected, age mellowed root briar by master craftsmen. In golden brown finish which accentuates the beautiful grain together with hallmarked sterling silver mounts and a unique space fitting mouthpiece to allow for years of wear. Available in selected shapes as illustrated.



12^{1/2}^S



3^S



8^S



20^S



1^S



B42



5^S



11^S



2^S



9^S



XL5^S



20^{FB}



11^{FB}

SYSTEM

PREMIER QUALITY

A high quality briar. Specially selected fine quality bowls mounted with a hallmarked sterling silver band and an army style mouthpiece. Available in smooth or sandblast finish.

Premier Systems are available in the same shapes as Standard Systems.



317



303



304



313



314



301



305



306



B42



312



XL302



307

SYSTEM

STANDARD QUALITY SMOOTH

A good popular quality briar. All fitted with nickel mounts and army style mouthpiece.
Fourteen models to choose from with a choice of highly polished, rustic or sandblast finish.
For the pipe smoker who prefers a straight pipe, one model (reference 31) is available in plain or rustic finish. Like the DeLuxe and the Premier, the Standard System reservoir traps moisture resulting in a perfectly dry smoke.



317



303



304



313



314



301



307

EBONY FINISH



307



312

RED FINISH



307



305

EST. 1865
Peterson[®]
OF DUBLIN

SYSTEM

STANDARD QUALITY SMOOTH



306



B42



312



302



XL305



31 STRAIGHT



SYSTEM

STANDARD QUALITY RUSTIC



317



303



304



313



314



301



305



306



B42



312



XL302



307



XL305



31 STRAIGHT



SHERLOCK HOLMES

ORIGINAL COLLECTION

The most successful series of pipes introduced by Peterson. First produced in 1987 to honour the most famous character in fiction, Sherlock Holmes. A 7 day set made from specially selected briarwood in shapes most favoured by Holmes. Available in smooth, ebony, rustic and sandblast.

All extra large bowls with sterling silver band. Peterson Lip or Fishtail mouthpiece.

Suitable for 9mm filter. Gold mounted available on request.



ORIGINAL



BASKERVILLE



BAKER STREET



DEERSTALKER



SQUIRE



PROFESSOR



WATSON



SHERLOCK HOLMES PIPE RACK
ORIGINAL COLLECTION

RETURN OF SHERLOCK HOLMES

Based on the success of the first series and made from specially selected briarwood in the time honoured Peterson tradition. All pipes are mounted with a hallmarked sterling silver band.

Available with Peterson Lip or Fishtail mouthpiece. Suitable for 9mm filter.

Gold mounted available on request.



RATHBONE



HUDSON



MYCROFT



LE STRADE



MILVERTON



STRAND



HANSON



SHERLOCK HOLMES PIPE RACK
RETURN COLLECTION

SHERLOCK HOLMES

MEERSCHAUM



ORIGINAL



BASKERVILLE



BAKER STREET



DEERSTALKER



SQUIRE



PROFESSOR



WATSON



SHERLOCK HOLMES PIPE RACK
CLASSIC MEERSCHAUM

SHERLOCK HOLMES

OTHER FINISHES



RUSTIC



LE STRADE



DEERSTALKER



ORIGINAL

RED SPRAYED



WATSON



BASKERVILLE



DEERSTALKER

SANDBLAST



ORIGINAL



STRAND

EBONY



MILVERTON



PROFESSOR

NATURAL GOLD MOUNTED



PROFESSOR



BASKERVILLE



ORIGINAL

SILVER CAP

The union of top grade mellowed briar and hallmarked silver combine to make this truly beautiful series. Using the highest grade bowls, the silversmith intricately works the silver by hand and fits the cap to each individual pipe. From the very outset, it is a process requiring skill, experience and time in equal measure. Available in most classic shapes with a Peterson Lip or Fishtail mouthpiece.

Peterson also offer Silver Caps with a unique hallmarked silver hinged lid which is custom made to fit each individual pipe. Available in selected shapes only.



69



XL90



106



150^S



6



264



03

SILVER CAP



RED



03



408

SANDBLAST

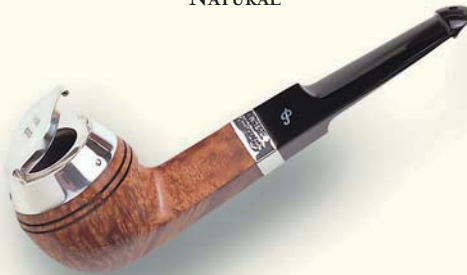


107



X220

NATURAL



150^s



106



XL81

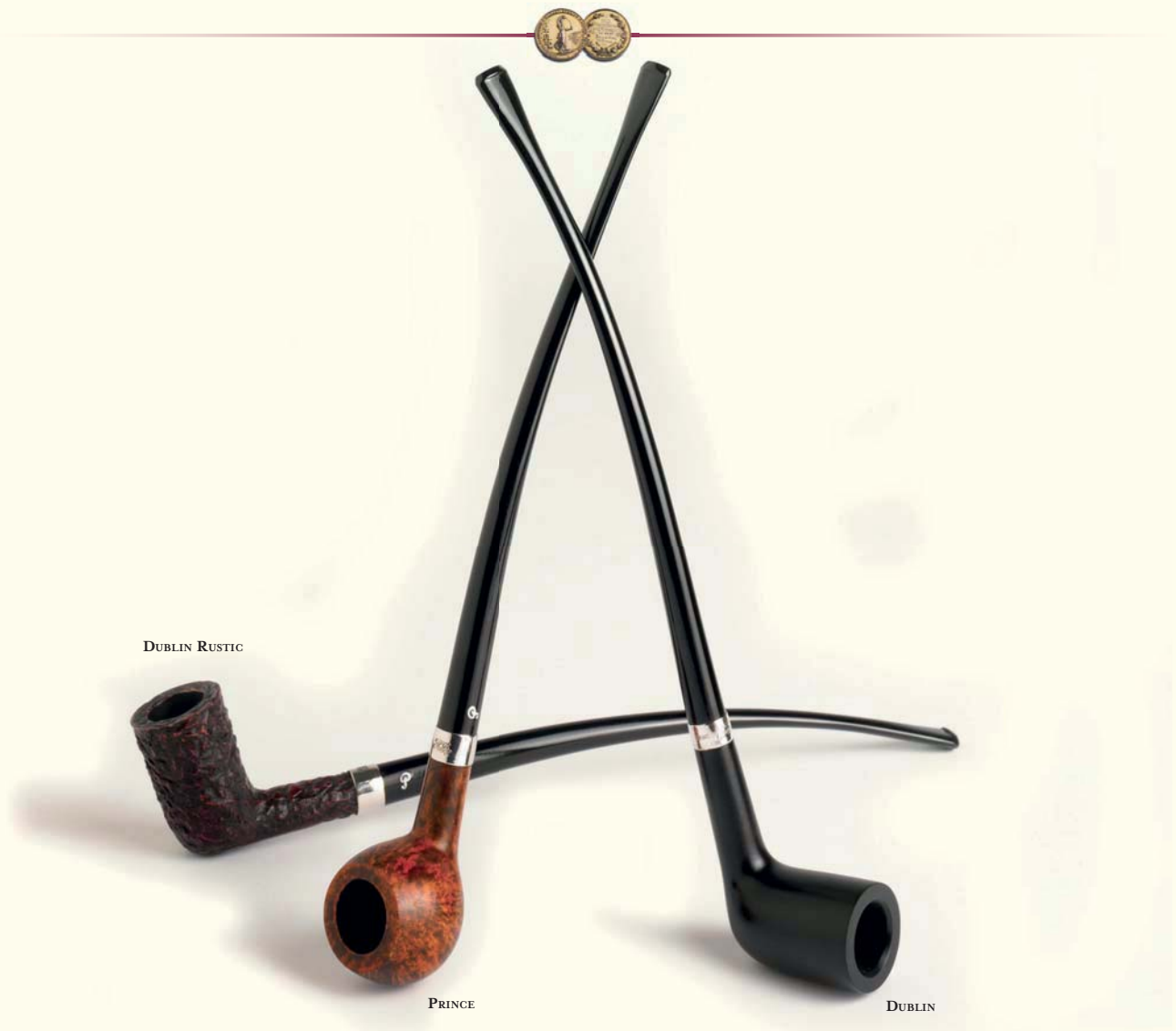
SPECIALITY PIPES

CHURCHWARDEN BRIARS

One of the earliest pipe shapes and still remains popular.

The overall length of the mouthpiece ensures a pleasant cool smoke, particularly suitable for an evening's relaxation. With nickel band, the Dublin,

Prince and D6 shapes in smooth or rustic finish are available with long slender Fishtail mouthpiece only. Also available in ebony with silver band.



D6 SMOOTH



D6 RUSTIC

SPECIALITY PIPES

CHURCHWARDEN BRIARS

Also available in either grey or green finish and Calabash smooth.



PRINCE



DUBLIN

D6

DUBLIN



D6



CALABASH



SPECIALITY PIPES

BELGIQUE AND CALABASH

Two petite and lightweight Peterson shapes crafted with all the care and know how of century old pipe makers, from finest quality briar in red polish and rustic finishes with Fishtail mouthpieces only.

TANKARD AND BARREL

Two attractively shaped pipes finished in red polish or rustic. A quality briar fitted with a nickel mount. Available with Peterson Lip only.



CALABASH SMOOTH



BELGIQUE SMOOTH



CALABASH RUSTIC



TANKARD SMOOTH



BARREL RUSTIC



CLASSIC RANGE

STERLING SILVER



full range of classic shapes
in a handsome red finish.

All fitted with a hallmarked sterling
silver band. Available with a Peterson Lip or
Fishtail mouthpiece and with 9mm filter.



01*



A1*



XLo2*



03*



05*



6*



440



15



53^s



69*



68*



65



86



87*



XL90*



X105*



106*



120*



150**



X220*



221^s



264



268



338*



407



408*



Bro*



B5*




999*



B11*

THE STERLING SILVER RANGE REPRESENTS
THE PETERSON CLASSIC SHAPE CHART
* SUITABLE FOR 9MM FILTER

SPIGOTS

 The Peterson tradition has long been associated with the fine sterling silver detail of our pipes.

The Peterson Spigot is characterised by a sterling silver covering on the tapered end of the mouthpiece which complements the sterling silver band of the pipe.

The Spigot style evolved from the practice of soldiers in earlier centuries who repaired broken pipes by sliding a used cartridge case over the shank and reinserting the mouthpiece.

In this unique spigot finished pipe, Peterson craftsmanship perfect the union of finest quality briar and precious metals. The silver is spun to shape and then fitted to the pipe. The craftsmanship, created with only a lathe and chisel as basic tools, is the finest in the industry.

Normally fitted with Fishtail mouthpiece.
Peterson Lip is available made to order.



MATT RED SPIGOT 65



MATT RED SPIGOT 221^S



MATT RED SPIGOT 606



BROWN SPIGOT XL02



BROWN SPIGOT XL90



BROWN SPIGOT XI05



GOLD SPIGOT 86



GOLD SPIGOT 68



GOLD SPIGOT 03^S



GOLD SPIGOT 120

SPIGOTS



EBONY 6



EBONY 80



EBONY 05^s



EBONY 338^s



RUSTIC 03^s



RUSTIC 408



RUSTIC 87



RUSTIC X220^s



SANDBLAST 69



SANDBLAST 106



SANDBLAST 01^s



SANDBLAST 999^s

SPIGOTS



RED SPRAY B5



RED SPRAY 408



RED SPRAY 68



GREEN SPRAY 80



GREEN SPRAY XL02



GREEN SPRAY 87



WALNUT SPIGOT XL02^S



DOMED RUSTIC XL15

SMOKE A PETERSON AND YOU'RE SMOKING THE FINEST HANDMADE PIPE IN THE WORLD. NO OTHER PIPE CAN MATCH IT FOR ITS SHEER SYMMETRY AND BEAUTIFUL BALANCE IN THE HAND OR MOUTH. SMOKE A PETERSON SILVER MOUNTED PIPE AND YOU'RE SMOKING A PIPE WITH A SILVER MOUNT THAT'S HALLMARKED FOR THE PURITY OF THE STERLING SILVER USED. FOR, JUST AS THE PETERSON NAME GUARANTEES THE HIGH QUALITY OF THE PIPE, THE HALLMARK IS YOUR GUARANTEE OF THE QUALITY OF THE SILVER. IT'S A CONVENTION THAT EVEN PRE-DATES PETERSON PIPES AND THEREIN LIES A STORY...

Hallmarking

WHAT IS A HALLMARK?

It is a series of marks collectively known as Hallmarks that are stamped on articles manufactured from gold, silver or platinum, after the articles have been tested and found to be of the minimum legal standard of purity.

Hallmarks are a legal requirement in Ireland.

Hallmarking is not a legal requirement in many countries but it is in Ireland.

Under Irish law, the standard of most gold, silver and platinum articles must be tested (known as assaying) at the Assay Office of the Company of Goldsmiths of Dublin in Dublin Castle. The legal standard of purity having been established, the articles are stamped with a series of marks ('Hallmarks') by the Assay Office.

HISTORY OF IRISH HALLMARKS

Although Ireland boasts an ancient tradition of craft metalwork in gold, silver, copper and bronze that dates back to circa 2,000 B.C., it was not until 1637 that the goldsmiths of Dublin formally petitioned King Charles I of England for a royal charter.

On 22nd December 1637, the king granted a charter, thus establishing the Assay Office and the Company of Goldsmiths of Dublin. Many of the provisions of that royal charter apply to the present day and the reason for its coming into being was to prevent abuses and deceptions then widely practiced due to the lack of a recognised mark or standard for gold and silver ware.

The Company of Goldsmiths, which was to be incorporate of itself and have perpetual succession, was given power to supervise the assaying of all gold and silver in the kingdom of Ireland and, if any person was found selling goods with intent to deceive the public, these goods were to be 'broke' and the manufacturer, trader and workman punished.

THE 'HALLMARK'

The mark chosen to guarantee the quality of the gold or silver was the Harp Crowned, known as the King Majesty's stamp. Originally, hallmarks consisted of the goldsmith's or silversmith's own proper mark plus this fineness mark. It applied to 22 carat gold and sterling silver (silver of 0.925 purity i.e. 925 parts of fine silver in each 1,000).

N.B. since October 1992 this symbol has been replaced by a new European Standard mark which gives the numerical value of the high quality or purity of the silver used in parts per thousand. This mark is known as the Millesimal mark, and the minimum value for Peterson silver is therefore .925.

In 1638 a date letter mark was first added to denote the year in which a piece was made or hallmarked, and it is now changed on January 1 every year. Another new mark in the form of Hibernia (Ireland) was introduced on 25th March 1730 to indicate that a duty had been paid.

If you look closely at the silver mount on a Peterson pipe, you will see the three hallmarks – Hibernia, Fineness and the date letter mark. They are your guarantee of pure sterling silver just as the Peterson name is your guarantee of true smoking pleasure.

PETERSON SILVER HALLMARKS

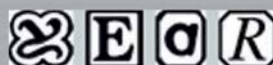
As well as the Peterson name and the words 'STERLING SILVER', all Peterson silver mounted or silver cap pipes carry three distinguishing marks:



1. 'Hibernia' seated, arm on harp, represents Ireland (country of manufacture). There have been minor design changes over the years.



2. The 'Harp Crowned' is the fineness mark denoting the high quality (purity) of the silver, and was used in a variety of designs until October 1992 when it was replaced by the new European Standard or Millesimal mark which gives the purity or quality of the silver in parts per thousand.



3. The Date Letter Code for the year in which the silver was hallmarked (see chart at right).

N.B. In certain years a fourth hallmark is applied, e.g. 1966 – a Sword of Light for the 50th anniversary of the Easter Rising, 1973 – the Gleninsheen Collar for Ireland's entry into the E.E.C., 1988 – the 150th anniversary of the founding of the Goldsmiths' Company of Dublin, 1988 – the Dublin Crest for Dublin City's millennium year, and in 1999 a special Millennium mark. These are illustrated here under the heading 'Special Marks'.


A 1896	O 1909	S 1922	U 1936	H 1949	U 1962	H 1975	C 1988	Q 2001
B 1897	P 1910	H 1923	V 1937	I 1950	V 1963	I 1976	D 1989	R 2002
C 1898	Q 1911	I 1924	W 1938	J 1951	W 1964	L 1977	E 1990	S 2003
D 1899	R 1912	K 1925	X 1939	K 1952	X 1965	M 1978	F 1991	T 2004
E 1900	S 1913	L 1926	Y 1940	L 1953	Y 1966	N 1979	G 1992	U 2005
F 1901	T 1914	M 1927	Z 1941	M 1954	Z 1967	O 1980	H 1993	
G 1902	U 1915	N 1928	A 1942	N 1955	A 1968	P 1981	I 1994	
H 1903	A 1916	O 1929	B 1943	O 1956	B 1969	R 1982	J 1995	
I 1904	B 1917	P 1930	C 1944	P 1957	C 1970	S 1983	K 1996	
K 1905	C 1918	Q 1932	D 1945	Q 1958	D 1971	T 1984	L 1997	
L 1906	D 1919	R 1933	E 1946	R 1959	E 1972	U 1985	M 1998	
M 1907	E 1920	S 1934	F 1947	S 1960	F 1973	A 1986	N 1999	
N 1908	F 1921	T 1935	G 1948	T 1961	G 1974	B 1987	O 2000	



Special Marks

- V 2006
- W 2007
- X 2008
- Y 2009
- Z 2010

HOUSE PIPES

 Extra large bowls available in bent and straight shapes.

All with sterling silver bands and also available with silver cap.

Choose from a range of finishes including natural, terracotta, oak, sandblast and rustic.



BILLIARD



BENT



CLASSIC RANGE

KILDARE

A quality briar with rich grain in a light brown semi matt finish. This series has proved very popular over the years and is available in all classic shapes. Also available with sterling silver mount or in selected shapes with an army nickel band. With Peterson Lip or Fishtail mouthpiece.



6



264



87



999



106



120



B11



03



65



05



87^s



106

CLASSIC RANGE

KINSALE SMOOTH & RUSTIC

Based on the Sherlock Holmes collections. A quality briar in a smooth burnt orange or rustic finish.
Available with a Peterson Lip or Fishtail mouthpiece. Also available in 9mm filter.



XL12



XL13



XL14



XL15



XL16



XL20



XL11



XL17



XL21



XL22



XL23^s



XL24



XL25



XL26

CLASSIC RANGE

EMERALD RUSTIC

Selected briar handcarved in black rustic with warm red hues. Peterson Lip or Fishtail mouthpiece. Available in all classic shapes.

TYRONE

A quality briar with a smooth walnut finish and matching rings. Available with Peterson Lip or Fishtail mouthpiece in all classic shapes.



CLASSIC RANGE

FLAME GRAINS

A quality briar, specially chosen for its grain fitted with distinctive hallmarked sterling silver band which enhances the briar. Available in all classic shapes subject to availability of quality briar.

Also available in a light golden colour which shows up the wonderful "flame" in the grain.

The amber coloured mouthpiece complements the colour of the bowl.



XL90



15



03



999



68



150^S



80



221



05



606



X105



106

CLASSIC RANGE

KILLARNEY

A range of classic shapes in an attractive deep red finish. Adorned with contrasting rings.

Available with Fishtail or Peterson Lip mouthpiece and with 9mm filter.

DONEGAL ROCKY

A handsome sterling silver mount graces this distinguished line of pipes for the discerning smoker who expects good quality and good value.

Available in a full range of classic shapes in rustic finish, sterling silver band and Peterson Lip or Fishtail mouthpiece.

Nickel band with Fishtail mouthpiece only.



CLASSIC RANGE

ARAN

A smooth matt masculine briar. Available in a full range of shapes with Fishtail mouthpiece only.

Also available with nickel mount.



106



107



120



150^s



221^s



264



268



338



407



440



606^s



999



CLASSIC RANGE

ARAN



01



02^s



03



05



6



86



15



53^s



65



68



69



80^s



XL90^s

SUPREME GOLD MOUNTED

Exceptionally rich in grain, these pipes are made from the finest briar and are almost as rare as Straight Grains. Each pipe has a highly polished natural finish and is fitted with a slender gold or silver band. With Peterson Lip or Fishtail mouthpiece. All classic shapes subject to the availability of quality briar.



221^S



150^S



999



69

CLASSIC RANGE

DELUXE SILVER MOUNTED

Superior quality briar, in golden smooth polished finish with hallmarked sterling silver band.

Peterson Lip or Fishtail mouthpiece. Available in classic shapes subject to the availability of quality briar.



03^s



05



15



221^s



68



264



268



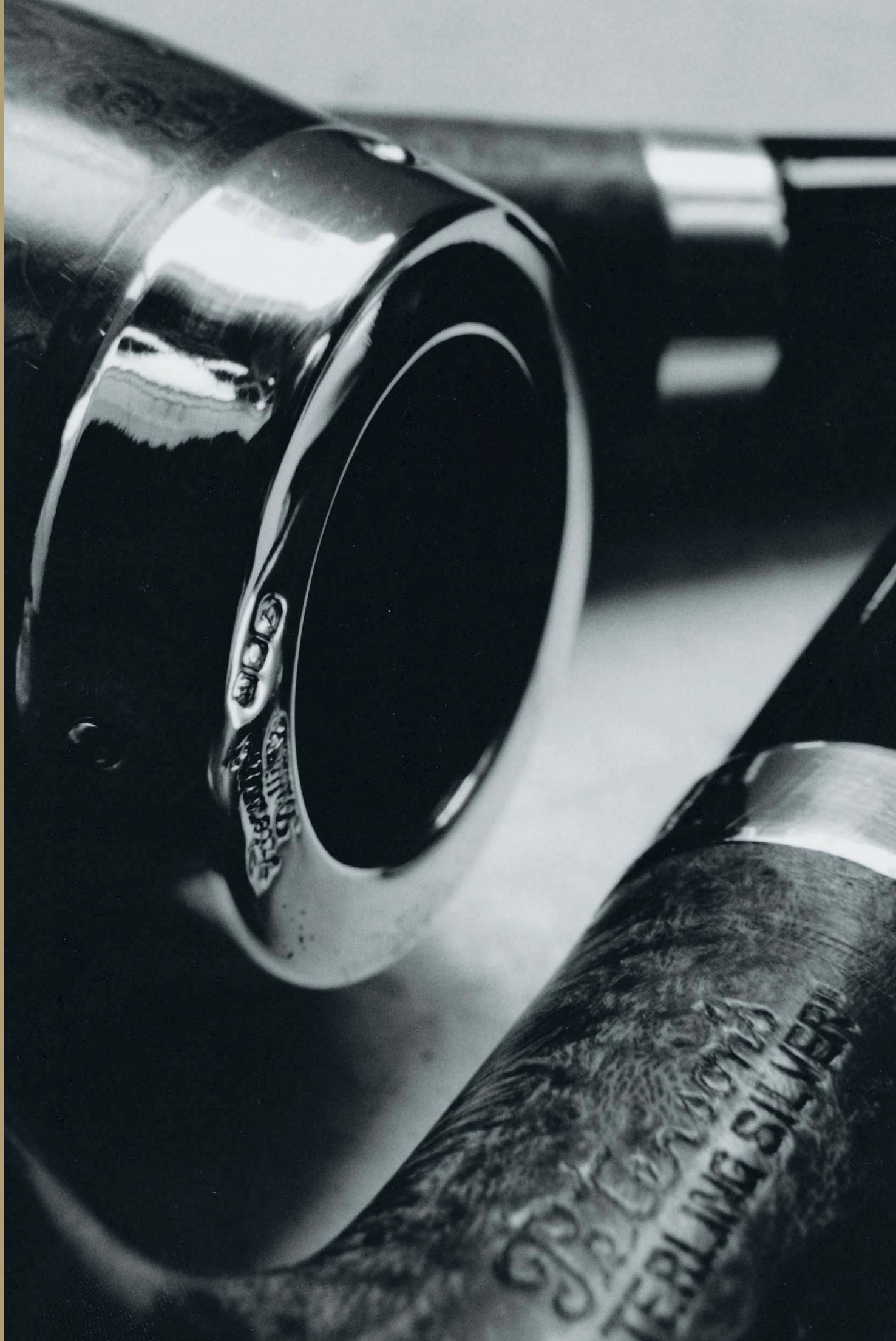
69




87



338



STRAIGHT GRAINS

raditional tools and methods of manufacture contribute to the individuality and unique characteristics of the Peterson pipe. Briars are carefully examined for imperfections and selected briars of exceptional grain, known as "Straight Grains" are carefully stored, waiting to be specially carved by hand by our most skilled craftsmen.

The hand crafted straight grain pipe and the increasingly rare skill required to make it, is something unique. To watch a craftsman shape, turn, sand and polish the 150 year old root of the Erica Arboria is to witness something quite special.

Only a very limited quantity of Straight Grains are available in any twelve month period and regrettably we cannot accept orders for specific shapes. With Peterson Lip or Fishtail mouthpiece.



HIGH GRADE SELECTION

ROSSLARE ROYAL IRISH NATURAL

These special pipes, all of which are silver mounted, are rare and a limited number are available each year. Shapes can vary depending on availability of suitable raw materials.

GRAFTON

The Grafton series is a natural finish and thus has almost perfect grain. Adorned with a sterling silver band, these pipes are available in most classic shapes, subject to availability of suitable raw material.



120



03



87



221



606



B11



999



80



150



106

Also available with ebony mouthpiece

CLASSIC RANGE

ROSSLARE ROYAL IRISH OTHER FINISHES

As illustrated below, this series is also available in a deep brown finish and in sandblast.
Selected shapes only.



999



87



6



408



606



606



221



106



120



03



408



B10

CLASSIC RANGE

CARA SMOOTH & SANDBLAST

An ebony pipe with a delicate silver band in smooth and sandblast finish.
Available in all classic shapes with Peterson Lip or Fishtail mouthpiece.



B5



221



A1



X105



05



80



69



87



338



B10

CLASSIC RANGE

RACING GREEN

A full range of classic shapes in racing green with hallmarked sterling silver band. Available with Peterson Lip or Fishtail mouthpiece.

HARP

This pipe has a rich dark brown colour which is beautifully set off by a Cumberland Fishtail mouthpiece. Each pipe is silver mounted with a harp, the symbol of Ireland, stamped on the mount which also has the legend "Peterson of Dublin, Irish Harp".



CLASSIC RANGE

IRISH SEA

Eight shapes, each with nickel and briar band in green/blue finish which reflects the name of this lovely series, Irish Sea.
 Fishtail mouthpiece only.

FERMOY

The Fermoy pipe has an attractive grey satin finish. Each pipe has a nickel band and the series is available in all classic shapes, Fishtail mouthpiece only.



CLASSIC RANGE

DUBLIN FILTER

Smooth semi matt briar with matching rings fitted with 9mm filter.

Available with Peterson Lip or Fishtail mouthpiece.

Please refer to the Peterson Classic shape chart on pages 20 to 21 for 9mm pipes available.



106



120



221^s



6



68



69



X105



CLASSIC RANGE

SILVER MOUNTED ARMY

This series in a range of 11 shapes is particularly favoured by the outdoor smoker. Each pipe in a rich honey brown matt finish is fitted with a fine sterling silver mount and army style Peterson Lip mouthpiece.

IRISH MADE ARMY

Beautifully grained briars. Available in 11 shapes as per silver mounted army in a rich brown semi matt finish with nickel band and Fishtail mouthpiece.



101



102



86



106



160



68



69



999



87



101



102



86



160



68



69



999



120

ALSO AVAILABLE IN SHAPES 120 AND 6.

ALSO AVAILABLE IN SHAPES 106, 6 AND 87.

CLASSIC RANGE

KENMARE

A rich red finish on the bowl complements the gold coloured "P" on the mouthpiece. This series is available in all classic shapes with Peterson Lip or Fishtail mouthpiece.

SHANNON

A beautifully finished pipe with a light and dark tan colour and attractive high gloss finish. The Shannon is a simple yet tasteful pipe, sure to impress even the most discerning smoker.

Available in all classic shapes with Peterson Lip or Fishtail mouthpiece.



CLASSIC RANGE

LIMERICK

A warm russet finish, adorned with an elegant silver band, the Limerick Series is named after the lovely city by the Shannon river. Available in all classic shapes with Peterson Lip or Fishtail mouthpiece. Also available with 9mm filter (subject to shape).

TARA

Tara, the home of the High Kings of Ireland in bygone days. In keeping with this tradition the Tara Series has a dark oak finish with a nickel band. Available in all classic shapes with Peterson Lip or Fishtail mouthpiece. Also available with 9mm filter (subject to shape).



CLASSIC RANGE

DALKEY

The Dalkey has a beautiful warm brown finish which is complemented by an orange coloured ring.
Available in selected classic shapes, with Fishtail mouthpiece only.



03



221



B10



68



69



338



106



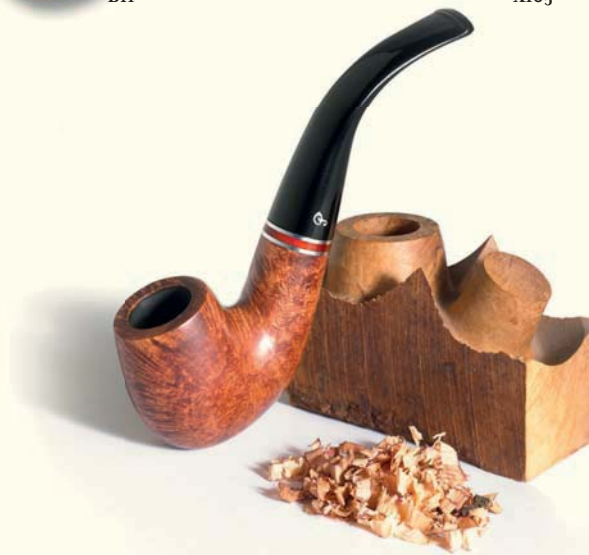
B11

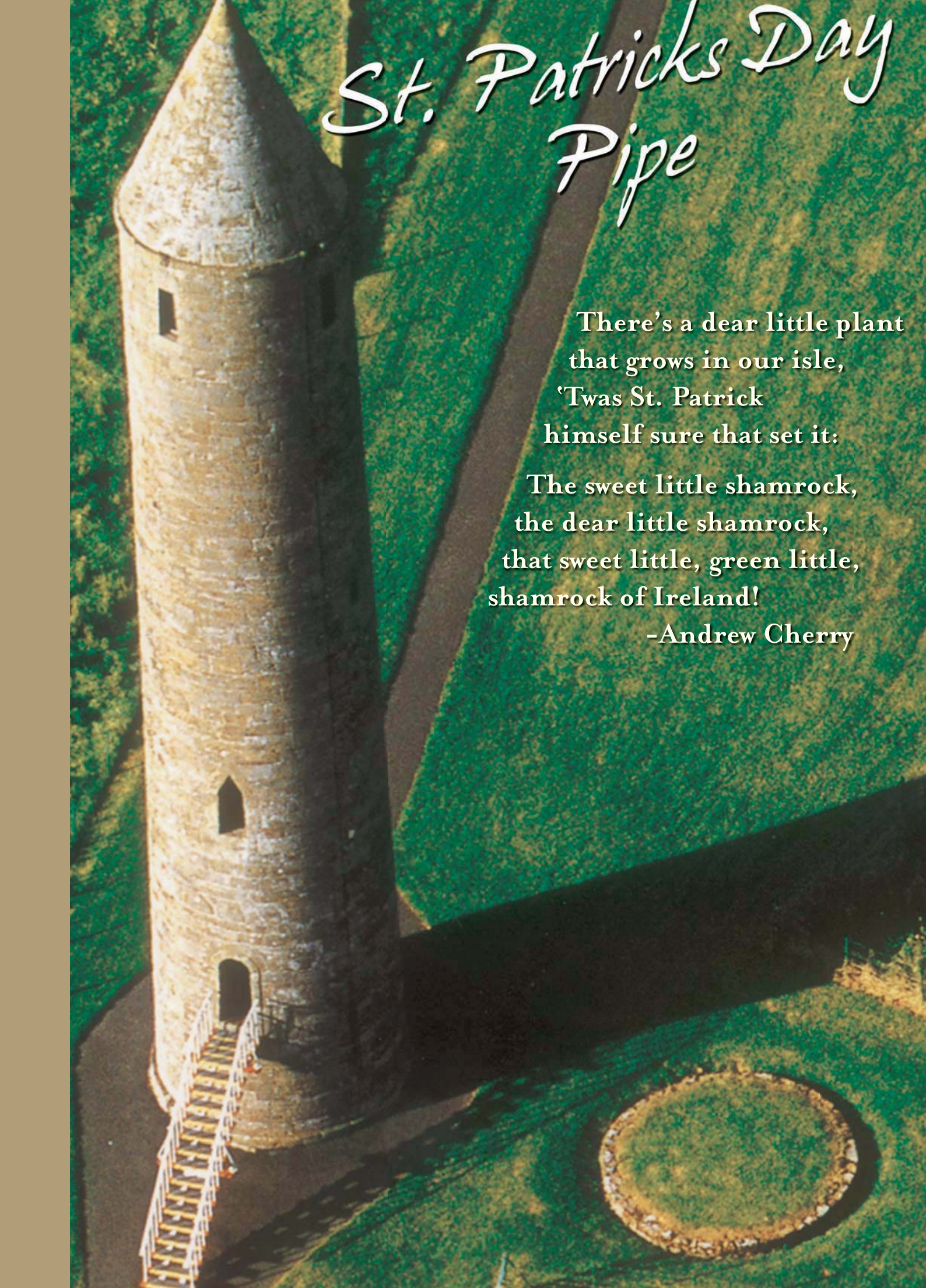


X105



999





St. Patrick's Day Pipe

There's a dear little plant
that grows in our isle,
'Twas St. Patrick
himself sure that set it:

The sweet little shamrock,
the dear little shamrock,
that sweet little, green little,
shamrock of Ireland!

-Andrew Cherry

ST. PATRICK'S DAY PIPES

Saint Patrick's Day (Irish: Lá 'le Pádraig), colloquially St. Patrick's Day or Paddy's Day, is an annual feast day which celebrates Saint Patrick (circa 385-461), the patron Saint of Ireland. It takes place on 17 March, the date on which Patrick is held to have died.

Each year Peterson's launch a range of pipes to celebrate Ireland's national holiday when everyone in the world wishes to be Irish. Available in most classic shapes.



120



68

2008

2009



107

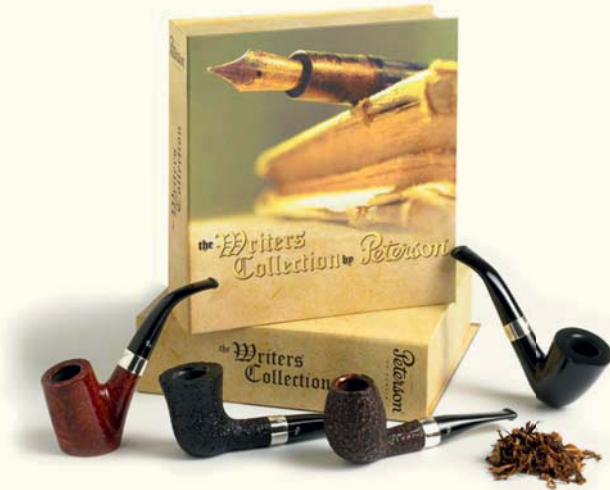


XL90

2010

COLLECTABLES

Each year Peterson introduce a collection of new shapes and finishes to commemorate famous people, places or events. These collectables are available only for a limited time and appeal to the pipe connoisseur.



WRITERS COLLECTION



CASTLE COLLECTION



EBONY & IVORY COLLECTION



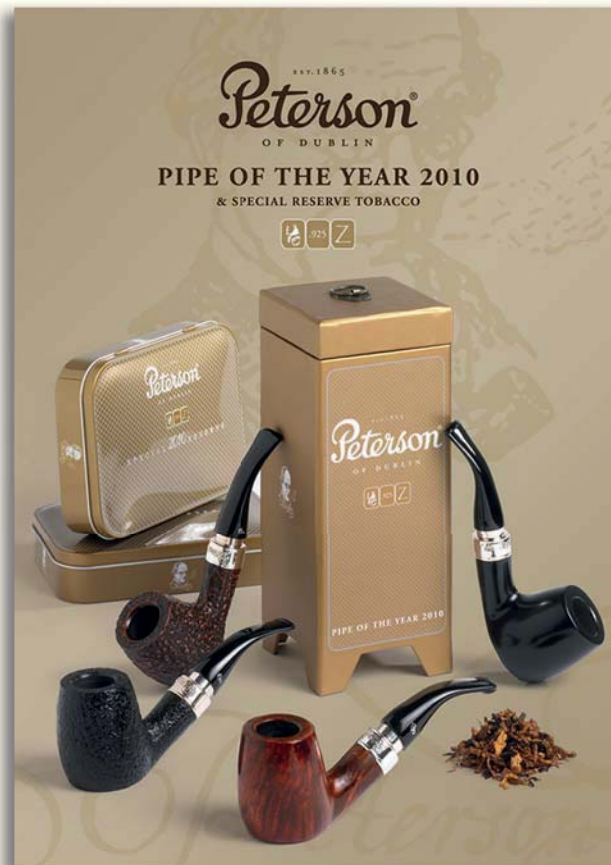
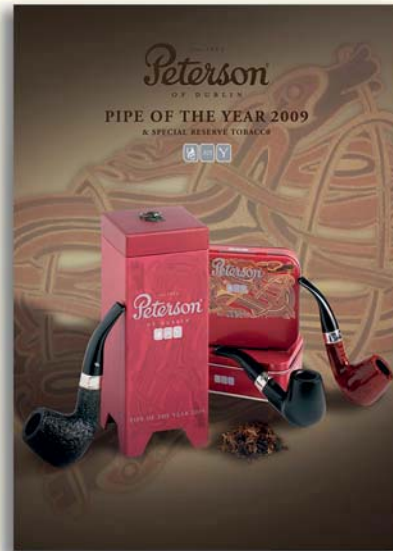
MARK TWAIN COLLECTION



ANTIQUE COLLECTION

PIPE OF THE YEAR

Each year, Peterson master craftsmen design and produce a select number of pipes in limited numbers - The Pipe of the Year. These pipes are particularly directed at the connoisseur who can recognise the characteristics of a product which is unique in its material, workmanship and styling. The smooth version of every Pipe of the Year is limited to 1000 pieces and each pipe is numbered and dated.





Peterson
OF DUBLIN
SUNSET
BREEZE

MADE EXCLUSIVELY for
PETERSON of DUBLIN

Vacuum sealed to ensure freshness.
No. weight 50g

IRISH FLAKE

A full-bodied blend made of 100% pure, first-class, air-cured, fine-cured tobacco. True to the pure, experienced pipe

TO OPEN INSERT COIN AND TWIST

Don't miss the opportunity to

PIPE TOBACCO

Don't miss the opportunity to put a little luxury in your pipe. Peterson pipe tobaccos are handblended by master blenders and sealed in vacuum tins to ensure freshness.

IRISH OAK

Originally blended from a rich, dark heavy bodied Cavendish, this tobacco is made smooth by adding a mixture of Zimbabwean orange smoking grades and aromatic Thailand Burley. It is mellowed using Black Perique blend tobacco from Louisiana bayou. As tradition dictates, the leaf is stored for many years in sherry oak barrels, giving the tobacco it's name and an exquisite mature oaken aroma.



IRISH WHISKEY

A traditional Irish ready rubbed blend renowned for it's smooth smoking quality. This blend incorporates various selected Virginia leaf to provide roundness of taste. Kentucky Fired, Indian Cured and Aromatic Thailand Burley are then added to the main blend. Finally, a light spray of Irish Whiskey essence gives this tobacco it's final unique aroma.



SHERLOCK HOLMES

This mixture is made from an old Irish recipe dating back to 1880 and is one of the finest tobaccos smoked in the time of Sherlock Holmes. The straight Virginia blend possesses all the natural flavour and aroma associated with Premier Virginia tobaccos.



OLD DUBLIN

A supreme style of smoking mixture based on the renowned cool smoky aroma of Cyprus Latika. Added are selected Golden Virginia with aromatic Black Cavendish and sweet Greek Oriental Basma Grades.



SWEET KILLARNEY

A unique mixture of selected tobaccos including Virginia Burley, Maryland blended with some Black Cavendish and topped with a Cream Caramel flavour. To make this wonderful tobacco even more attractive, it is blended with hand-rubbed Virginia Flake which results in a fantastic aroma.



SUNSET BREEZE

This excellent mixture is a blend of first choice Virginia, Burley and Black Cavendish. A promise for a unique smoking experience which is crowned by a wonderful Amaretto aroma that also gives enjoyment to the smokers surroundings.



LUXURY BLEND

Luxury Blend is a smooth and exquisite blend of three different Virginias, sweetish Black Cavendish, fragrant Burley and a fabulous aroma of Orange and Honey, with an added touch of the all time favourite Vanilla flavour. Specially blended for both taste and aroma.



GOLD BLEND

Gold Blend is a considered mix of Jet Black Cavendish, bright and dark Virginias and fragrant Burley. In addition, there is an extremely pleasant note of Hickory Nut and Vanilla, while a touch of Cinnamon is added to ensure that Gold Blend is a unique smoking experience.



DE LUXE MIXTURE

This Black Cavendish Aromatic is a selection of matured Virginia tobaccos from Brazil and Africa blended with a loose cut mellow Black Cavendish. A tasteful flavour consisting of Vanilla, Walnut & Honey has been added.



CONNOISSEUR'S CHOICE

A satisfying, spicy and aromatic blend of Black Cavendish. Golden & Red Virginia, mixed with luxury broken flake. The aromatic recipe of Tropical fruit, Vanilla & Rum make this blend smooth and very Pleasant.



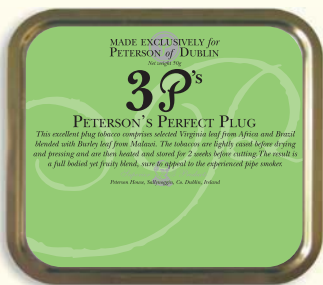
UNIVERSITY FLAKE

A well known presentation of a style of tobacco allowing the experienced smoker to rub out the flake to the texture preferred. The blend, based on Virginia grades is mixed with Mahogany, brown and Orange Virginia and sun cured leaf from India and is slowly pressed for days into cakes of tobacco and then sliced into flake pieces. This style of tobacco is ideal for it's slow, even burning rate, suitable not only for restful contemplation but can be smoked out of doors in any type of weather.



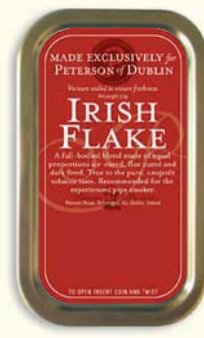
3 P's PETERSON'S PERFECT PLUG

This excellent plug tobacco comprises selected Virginia leaf from Africa and Brazil blended with Burley leaf from Malawi. The tobaccos are lightly cased before drying and pressing and are then heated and stored for 2 weeks before cutting. The result is a full bodied yet fruity blend, sure to appeal to the experienced pipe smoker



IRISH FLAKE

A full-bodied blend made of equal proportions air-cured, flue cured and dark fired. True to the pure, unspoilt tobacco taste. Recommended for the experienced pipe smoker.



SEASONAL BLENDS

TOBACCO

To complement our existing pipe tobacco range, we have introduced 2 seasonal tobaccos in limited quantities - Summertime and Holiday Season. Each of these are blended to reflect the tastes and aroma of the season be it Summer or Winter. Sure to please all pipe smokers.

CHRISTMAS/HOLIDAY SEASON 2009



CHRISTMAS/HOLIDAY SEASON 2010



SUMMERTIME 2010

SPECIAL RESERVE

TOBACCO

Peterson Special Reserve is available each year in a limited quantity of specially blended tobaccos which are produced in Germany by the world renowned tobacco manufacturer, Kohlhase and Kopp. Every year a different blend, but in all cases we only select the finest tobacco for our Special Reserve.



SPECIAL RESERVE 2007, 2008 & 2009



SPECIAL RESERVE 2010

CIGARS AND CIGARILLOS



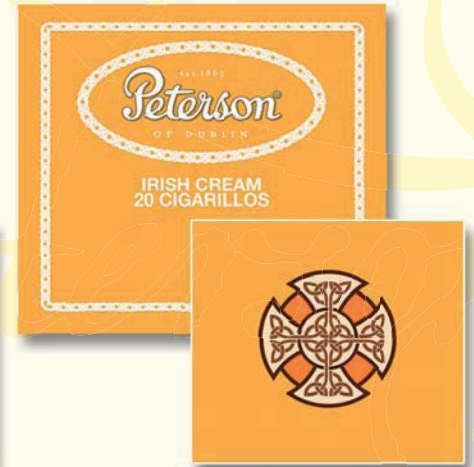
NATURAL

These cigars are made using carefully selected Sumatra Leaf wrapper to complement the filler blends of chosen tobaccos from the island of Indonesia, and the countries of Brazil and Mexico to form a pleasant yet flavoursome cigar.



IRISH WHISKEY

These cigars are made using carefully selected Sumatra Leaf wrapper to complement the deep Irish Whiskey flavours contained within the filler blend. The taste and aromas of Irish Whiskey are blended with carefully chosen tobaccos from the islands of Indonesia and countries of Brazil and Mexico to form a very pleasant cigar.



IRISH CREAM

These cigars are made using carefully selected Sumatra Leaf wrapper to complement the warm Irish Cream flavours contained within the filler blend. The taste and aromas of Irish Cream are blended with carefully chosen tobaccos from the islands of Indonesia and countries of Brazil and Mexico to form a very pleasant cigar.



100% Tobacco. Wrapped with best Sumatra leaf, Indonesian binder. Filler blend includes Latin American and Indonesian tobaccos with a generous portion of Havana filler.



el
ru
N RES

CORONA

CORONA

SELVA

Peter Dinklage Peterson
GRAN RESERVA

Peter Dinklage Peterson

CTION

HANDMADE CIGARS

GRAN RESERVA

Made in Honduras using a blend of Nicaraguan and Honduran tobaccos, Gran Reserva cigars are full of taste and flavour. The Cameroon wrapper is slightly sweet yet spicy enough to give the cigar a balanced character from start to finish. The medium body is consistent and satisfying.



Box of 25



CHURCHILL
175mm (6 1/2")
x 19.3mm (48")



BELICOSO
160mm (6 1/8")
x 20.3 (52")



TORO
156mm (6")
x 19.8mm (50")



CORONA
140mm (5 1/2")
x 18.5mm (44")



ROBUSTO
130mm (5")
x 19.8 (50")

THE GIFT COLLECTION

Here we have designed a range of gifts around our core products of pipes, tobaccos and cigars. These products are unique and we believe that they offer a different dimension to pipes, tobacco and cigars. You can be sure that the everlasting quality and fine craftsmanship of a Peterson Gift will always be appreciated.



GIFT 005



GIFT 004



GIFT 003



GIFT 002



GIFT 001



GIFT 007



GIFT 006



GIFT 008

ACCESSORIES

CLASSIC COLLECTION

In addition to our deserved reputation for the finest handmade pipes, tobaccos and cigars, Peterson also has a superb range of handcrafted leather combination and tobacco pouches.



POU 132 - PIPE BAG
WITH SPACE FOR 2 PIPES & TIN OF TOBACCO



POU 133 - PIPE BAG WITH SPACE FOR 2 PIPES,
TOBACCO, PIPE CLEANERS AND SMOKER'S KNIFE



POU 134 -
ROLL UP TOBACCO POUCH



POU 135 - COMBINATION POUCH WITH
SPACE FOR 1 PIPE AND TOBACCO



POU 137 - COMBINATION POUCH WITH
SPACE FOR 2 PIPES AND TOBACCO

ACCESSORIES

AVOCA COLLECTION

Looking for something special, elegant and functional? The Avoca leather collection is what you have been waiting for. The collection is made of the finest dark grey lamb nappa. To give that special touch we have chosen racing green leather for the inside flap. A matching zipper and Peterson medal "P" shaped puller complements this striking design.



Pou 146 -
STAND UP TOBACCO POUCH



Pou 145 -
ROLL UP TOBACCO POUCH



Pou 143 - COMBINATION POUCH
WITH SPACE FOR 1 PIPE AND TOBACCO



Pou 144 - COMBINATION POUCH
WITH SPACE FOR 2 PIPES AND TOBACCO



Pou 140 - PIPE BAG WITH SPACE FOR 2 PIPES,
TOBACCO, PIPE CLEANERS AND TAMPER



Pou 141 - PIPE BAG WITH SPACE FOR 3 PIPES,
LOOP FOR A ROLL UP POUCH AND TAMPER



Pou 142 - PIPE BAG WITH SPACE FOR 4 PIPES,
COMPARTMENT FOR TOBACCO TIN, LOOP FOR A ROLL UP POUCH AND TAMPER

ACCESSORIES



FLA 131 FLA 137 FLA 139 FLA 135 FLA 141 FLA 143 FLA 133 FLA 146

6oz Hip Flasks - also available in 4oz size



SINGLE METAL
STAND



3 PIECE ACRYLIC
DISPLAY



6 PIECE ACRYLIC
DISPLAY



6 PIECE WOODEN
PIPE RACK



12 PIECE WOODEN
PIPE RACK



SINGLE PIPE
STAND BLACK



PIPE RACK BLACK
FOR 3 PIPES



ASHTRAY FOR 2 PIPES
AND TAMPER



CIGAR/PIPE
ASHTRAY



CIGAR ASHTRAY
FOR 2 CIGARS



CIGAR ASHTRAY
FOR 4 CIGARS



CIGAR CUTTER



CIGAR SCISSOR

ACCESSORIES



TAMPER



FILTERS



PIPECLEANERS

POINT OF SALE



POSTER 1



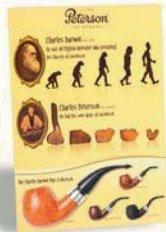
POSTER 2



POSTER 3



TENT CARDS



CHARLES DARWIN COLLECTION STRUT



PIPE TOBACCO STRUT



SUMMER TIME TOBACCO STRUT



MARK TWAIN COLLECTION STRUT



WRITERS COLLECTION STRUT



PIPE OF THE YEAR 2010 STRUT



DVD



ACRYLIC LOGO



WINDOW STICKER



COUNTER MAT



BAG



12PCS PIPE CASSETTE



6PCS PIPE CASSETTE



Today Petersons Pipes are still faithfully made to the same exceptional standards incorporating the original Peterson design.

“The Finest Pipe in the World”

